

MISSION STATEMENT

Strategies & Goals **2019-2025**



MISSION STATEMENT



ARQUS EUROPEAN UNIVERSITY ALLIANCE

Universidad de Granada
Universitetet i Bergen
Universität Graz
Universität Leipzig
Université de Lyon
Università degli Studi di Padova
Vilniaus universitetas



UNIVERSIDAD
DE GRANADA



UNIVERSITETET I BERGEN



UNIVERSITÄT
LEIPZIG



UNIVERSITÉ
DE LYON



UNIVERSITÀ
DEGLI STUDI
DI PADOVA



Vilniaus
universitetas

MISSION STATEMENT

Table Of Content

▪ Arqus European University Alliance	07
▪ Vision	07
▪ Mission	07
▪ Core Values	10
▪ Major Goals for 2025	11
▪ Cross-cutting Enabling Strategies	15
▪ Governance, Coordination and Advisory Structures	19

ARQUS EUROPEAN UNIVERSITY ALLIANCE

The Arqus European University Alliance brings together the universities of Granada, Bergen, Graz, Leipzig, Lyon, Padova and Vilnius, seven longstanding comprehensive research universities who share extensive experience in joint projects in many fields, and a common profile as internationalized institutions with deep regional engagement in medium-sized cities.

The Alliance’s name stems from the Latin term arcus/arquus, for arch, representing the strong foundations the consortium is laying for building bridges toward a shared future, to respond to the grand global societal challenges and to advance towards deeper European integration.



VISION

The Arqus European University Alliance aspires to build on the member universities’ sound prior experience in cooperation in order to achieve a high level of integration in its members’ policies and action plans in order to:

- enhance the education of critically engaged European and global citizens who are able and willing to contribute to a multicultural, multilingual and inclusive Europe which is open to the world;
- increase and improve the joint research capacity of the partner universities;
- better respond to the grand societal challenges of the 21st century in Europe and beyond.

MISSION

Through enhanced sustained cooperation, the Arqus European University Alliance will work together as a laboratory for institutional learning in an innovative and open way to:

- attain a substantially higher level of quality in education and research, and deeper societal, cultural and civic engagement;
- educate engaged critical European citizens to become competent decision-makers;
- become a model for European university integration;
- disseminate its experience, challenges and successes at European and global level.



CORE VALUES

The Arqus European University Alliance:

- is based on the conviction that by working together it is possible to move forward towards existing institutional and new Alliance strategic goals faster, better and with greater societal impact than individually;
- defends and promotes the core European values of democracy, respect for diversity and of human rights, and the rule of law as the transversal basis for all its activities and policies;
- undertakes to work towards the United Nations' Sustainable Development Goals as a roadmap towards future global human wellbeing;
- is committed to academic freedom and open and critical dialogue, recognizing the need to ensure academic integrity at individual and institutional level and, as public institutions, to assume full responsibility for our activities, and render transparent account of them to authorities and society;
- is a space for personal and professional development for all, situating people clearly at the centre;
- believes that an essential first step in the qualitative leap desired by the European Education Area is staff development and support in all areas of cooperation;
- is firmly committed to ensuring and promoting equity and inclusion, and to eliminating barriers of all kinds to access to higher education, and hence to knowledge and to the opportunities it creates;
- believes that its members' global impact is enhanced by being firmly rooted in each partner's local and regional contexts;
- believes that the doctoral cycle is a key learning space, with capacity for strengthening the knowledge triangle and bridging the educational and research missions of the Alliance, and for establishing lasting disciplinary and transversal cooperation networks for the future;
- is strongly committed to a participative approach to its governance and decision-making structures, to promoting inter-institutional dialogue at all levels of individual members' internal structures, and to ensuring that all those belonging to the university community have the possibility to become familiar with, participate in, and influence the Alliance's activities.



ARQUS EUROPEAN UNIVERSITY ALLIANCE MAJOR GOALS FOR 2025

INTEGRATION

The principal ambition of the Arqus Alliance is to act jointly as a laboratory from which to move forward in the design, testing and implementation of an innovative model for deep inter-university cooperation. The Alliance aims to consolidate a joint governance structure to facilitate the development of consensual joint policies and action plans, to consolidate participative structures to facilitate cross-cutting integration at all levels of the partner institutions, and to share its experience with other groupings in order to communicate the added value to be found in its model of integration.



ENABLING PEOPLE

The Arqus Alliance aims to centre its efforts on enabling people: enabling a widely diverse student body and enhancing their learning experience; enabling a similarly diverse staff community and promoting their individual and collective professional development; enabling society at large by opening our doors and fully responding to the mission it has entrusted us.



WIDENING ACCESS AND INCLUSION

The Alliance aims to promote widening access for diverse student and staff populations, facilitating inclusive admission and recruitment policies, and attracting talent from less represented groups. The Alliance aims to develop shared policies for inclusion and diversity for all members of the university community.



QUALITY STUDENT LEARNING

To enhance the quality of student learning and employability, the Alliance aims ultimately to have a shared academic offer. The Alliance aims to share new forms of mobility and best practice for recognition of all kinds: for credit mobility; for formal, informal and non-formal learning; for prior learning; for service learning; and of qualifications. The Alliance aims to share innovative and inclusive teaching and learning methodologies and staff development initiatives.



MULTILINGUAL UNIVERSITY

The Alliance aspires to ensuring truly multilingual environments at partner universities using its language diversity to promote multilingualism throughout the universities' activities, for the entire community and beyond. The Alliance aspires to moving beyond language competence in order also to promote intercultural communication competence amongst students and staff.



ENTREPRENEURIAL UNIVERSITY AND REGIONAL ENGAGEMENT

The Arqus Alliance aims to stimulate entrepreneurship and creativity amongst the entire university community and across different areas of activities, through mutual learning, by engaging regional resources and building on the complementary strengths of all its members. It aims further to devote its efforts to developing and sharing innovative cross-sectoral collaborations.



RESEARCH SUPPORT AND EARLY CAREER RESEARCHER DEVELOPMENT

The Alliance aims to share best practice in research management and support and to find ways in which to share a variety of resources. It aims to promote joint doctoral and post-doctoral initiatives as the basis for early-stage researcher development and to promote shared opportunities. It further aims to enhance actual research collaboration within the Alliance and with European and global partners.



GLOBAL ENGAGEMENT

The Alliance aims to set up joint global initiatives in education and research, building on the complementarity of the members' strategic partners worldwide. It further aims to build on that complementarity to promote Europe and Arqus as an attractive space for talent from around the world to study, research or work.



CROSS-CUTTING

ENABLING STRATEGIES

PEOPLE-CENTRED

The Alliance centres its primary interest on people, as the essential component and resource of the knowledge society, and the *raison d'être* of education in general and higher education in particular. The policies and activities of the Alliance are designed to provide quality provision and attention to the entire community of diverse persons participating in our higher education institutions, and to ensure their full participation in and ownership of this initiative. The strategy will address the three major groups composing the university community: students and potential students; academic staff; administrative, technical and support staff.



A LABORATORY FOR INSTITUTIONAL LEARNING

The Alliance will work as a shared laboratory for experimentation in innovative actions for deep university integration and inter-university cooperation. As such, it will design and test a wide variety of actions, rejecting those which prove to be inviable or unsuccessful, and implementing and disseminating those which prove feasible and beneficial. The results of the experimentation will provide a sound and informed source for deep evidence-based institutional learning within the Alliance, and for the enhancement of higher education policies at national and European level. They will be shared with other universities and networks and with the higher education sector in general.



MOBILITY AND RECOGNITION

The seven partner institutions in the Alliance share a strong tradition and long experience in student and staff mobility at both European and global levels, and are fully committed to the principles of the Erasmus Charter for Higher Education, in particular to full and automatic recognition of all mobility study periods and of all diplomas awarded by partner institutions. This principle of recognition extends also to various forms of recognition of staff mobility. The Alliance is deeply aware of the centrality of staff and researcher mobility to the attainment of its long-term objectives, and as such will work towards feasible shared policies for recognition in both workload systems and evaluation processes.

Building on this experience and existing cooperation, the Alliance takes up the challenge of working towards seamless mobility of all kinds with full recognition for all members of the community, by promoting physical, blended and virtual mobility in a wide variety of formats, including -where appropriate- structured and embedded mobility in the form of joint programmes in all cycles. Intersectoral mobility for work-based learning, research-based learning and service learning will also be priorities, as a special form of experiential learning, strengthening employability, entrepreneurial mindset and societal engagement.



JOINTNESS AND PARTICIPATION

From its inception, the Alliance has promoted a participative approach to the organization and planning of its activities and structures. The Alliance has designed shared governance structures to ensure smooth and efficient dialogue among the partner institutions at all levels: rectors and senior management; departments and faculties; academic and research staff; technical, administrative and support staff; students and their representative associations. The Alliance has also instituted internal Committees at each partner university to ensure internal follow-up and wide involvement in Alliance activities. Similarly, the Alliance will hold an annual event which will rotate around partner institutions, focussing on an annual theme, and facilitating widespread participation of staff and students from all partners.



OPENNESS

The Alliance is committed to contributing actively to the reshaping of Open Science and publication culture, specifically regarding Open Access and Open Data. The partners will stimulate open interdisciplinary and cross-disciplinary approaches to both study programmes and research to ensure the acquisition of the high-level, transferable competences required by the rapid evolution of technology, the economy and the labour market. Arqus believes this to be vital in order to ensure that complex societal challenges are addressed from the innovative and creative perspectives necessary for the pursuit of effective responses. Furthermore, the Alliance will attempt to break down the barriers which currently persist between education and research within higher education. To this end, it will promote research-based approaches to teaching & learning, attempt to ensure that research activities are fed directly into study programmes allowing students to participate in ongoing research, and pursue shared policies to guarantee balanced recognition of both activities in staff evaluation and promotion.



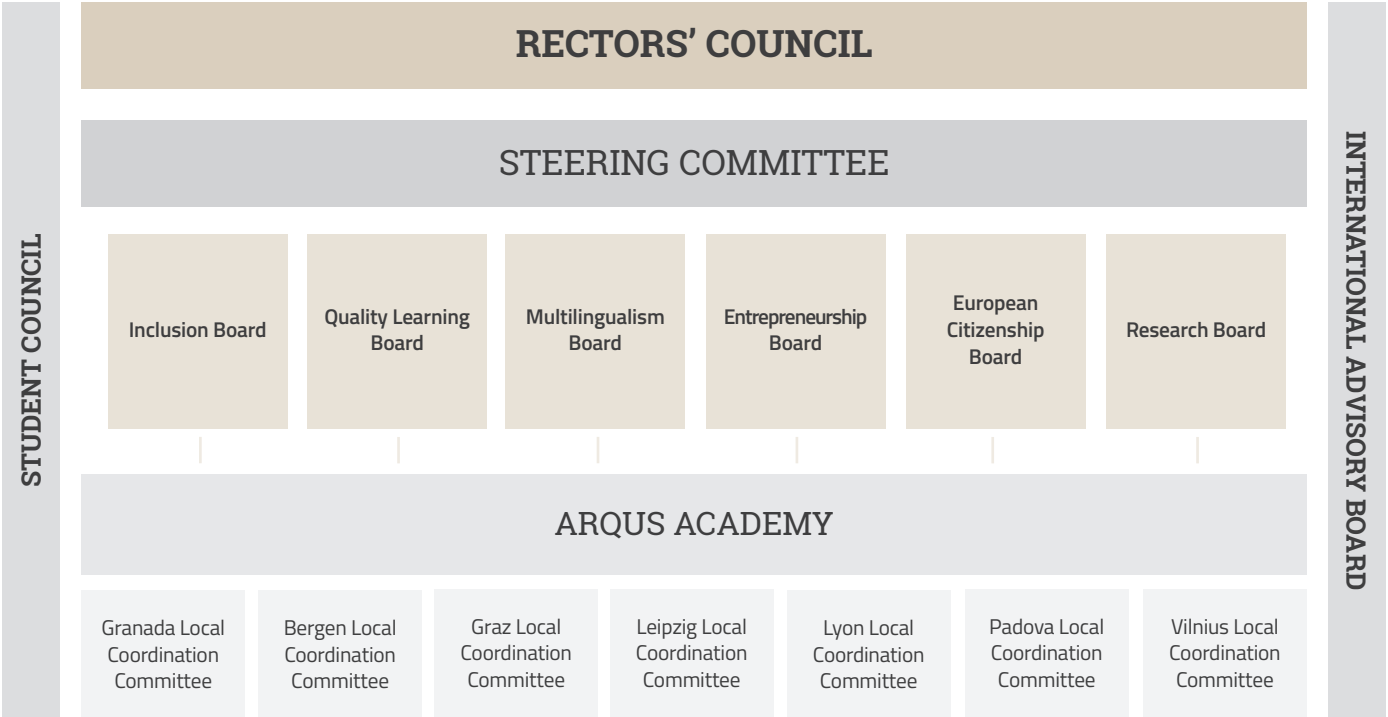
SUSTAINABILITY

The Alliance believes firmly that an essential element for its success and sustainability is the close link between its joint goals and policies and those of each partner's institutional strategy already in place. The partners are committed to investing in implementing and sustaining joint activities, within the bounds of their financial possibilities. The cross-cutting participation of staff and students at partner universities in governance structures and work plans for the Alliance will ensure potential for lasting cooperation in teaching & learning, research and outreach activities.



The Arqus Alliance will establish detailed three-year work plans to ensure that progress is made for each of the major goals above, with detailed performance indicators for each specific objective. Where possible, the indicators will be well-established external indicators, to allow benchmarking and comparability. The first of the work plans will be submitted to the European Commission in the context of the first pilot call for the European Universities initiative (Erasmus+ Key Action 2) in 2019.

GOVERNANCE, COORDINATION & ADVISORY STRUCTURES





UNIVERSIDAD
DE GRANADA



UNIVERSITETET I BERGEN



UNIVERSITÄT
LEIPZIG



UNIVERSITÉ
DE LYON



UNIVERSITÀ
DEGLI STUDI
DI PADOVA



Vilniaus
universitetas

